

## **Reinventing Governance Inter-Regional Cooperation Efforts Reduce Behavior Arrogance and Government Reform Public Apathy attitude.**

Sugeng Rusmiwari<sup>1</sup>, Annisa Purwatiningsih<sup>2</sup>, Willy Tri Hardyanto<sup>3</sup>, Akhirul Aminulloh<sup>4</sup>

<sup>1,2</sup> Social Science and Politic Science Faculty of Tribhuwana Tungadewi University, Malang, East Java,  
Jl. Telaga Warna Blok C, Tlogomas, Malang  
Telp. : 081334995112; 0341565500; fax 0341565522

**Indonesia**

Author Email : [sugengrusmiwari@yahoo.co.id](mailto:sugengrusmiwari@yahoo.co.id) Blog : [sugengrusmiwari.blogspot.com](http://sugengrusmiwari.blogspot.com)

**Abstract** Indonesia as a big country, supported by the potential development resource management necessary stability or Reinventing Governance propped one area to another or to the cooperation with the effective governance that emphasizes public service (Prima) Democracy through Partnership for Public Policy between regions. For that we need a fundamental change in how to think, act and behave for the Government as a public organization can actually provide a public service that is able to solve problems Prima arrogance and attitude Apathy Government Reform Society. Research methodology: quantitative descriptive research, the main source of data is the primary data, the instrument refers to the Likert scale questionnaire, supported by interviews tailored to the needs and continued with field observations, the technique used is the sample side aiming, data analysis using path analysis. Its meaning is that, the first model is Reinventing Governance Model Inter-Regional Cooperation Through Governance Reform to Reduce Government Arrogance and Apathy Public Attitudes, by 92% While the model is the second most effective is that Building Services good to Reduce Government Administrative Arrogance and Apathy Public Attitudes, amounting to 91.2%

**Keywords:** *The Good Governance, Behavior & Attitude Arrogant Apathy.*

### **1. Background**

Rumors in the community who say the only member of the Government Reform no response, not only can tell anyway and many others which basically lead to a discourse that temperament Administrative government now or in the reform era is dire and no better than before may be some truth. Justification is at least when referring to some of the findings / conclusions from the results of previous research that has been done and other resources that are scientifically reliable.

So Urgency (Virtue) study was Observing and studying in depth and comprehensive on several aspects of the problem, namely: Finding the optimal potential for pioneering basic and inter-regional cooperation is supported by the Inter-Regional Cooperation through Regional Policy / Public Policy; Developing Governance Model in running Public Service (Prima) Democracy; Finding Motivation solutions Arrogant behavior by affecting the Government Apparatus Public Apathy attitude. Reinventing Governance Model Design Inter-Regional Cooperation Through Governance and Service Delivery in Harmonious Effort Reduces Behavioral Apparatus Government Arrogance and Apathy Public Attitudes.

Sugeng Rusmiwari Research, in 2007, conducted in East Java includes Madiun, Mojokerto cities and counties Pasuruan, with the result that the Legislature has a tendency Arrogant behavior, with the mean score, 3.81 or by 71.7%, with the result of course is not we expect joint; In 2008, Sugeng Rusmiwari, researching community attitudes Apathy, the Apathy attitude from the community also tends Apathy, the mean score of, 3.54 or 69%, of the net community aspiration. What about the condition of their constituents or the people themselves? How did the visionary leadership and integrative built over the years, has been effective? It's something interesting to study. From the results of a survey conducted of Peace Foundation, 2003 showed that the process of democratization has not fully taken place ideal. It suggests that at the grassroots level (grass root) still impressive attitudes do not care about the subject matter related to public decision that ideally involves them. Public indifference is due to a lack of knowledge and their apathy. Residents do not know that he was, in fact have the right to participate in public decision-making. They apathetic because finding his voice (opinion) will not affect public decisions / public policy.

In this research Sugeng Rusmiwari (2007), conducted in East Java (Madiun, Mojokerto and Pasuruan) that: Legislative Behavior Tend Arrogant by 71.7%. Public Attitudes (2008) Tend Apathy by 69%. In 2010 research was conducted in the city of Malang, Batu and Malang regency, that: Responsibilities and Behavior Arrogance Legislative Accountability: Responsibility tend to be good at 56.94% accountability tend to be good at 64.29% and Accountability Responsibilitas Apathy Public Attitudes: Responsibility tend to be good for Accountability tends to either 62.50% at 53.95% and Integrative Leadership Visionary: Visionary Leadership tends good for Integrative Leadership 56.81% 61.72% less likely either the Public Service (Prima) Democracy, tend to be less good at 56.25% .

## **2. Research Methods, Data Analysis and Interpretation**

Research carried out in the category of quantitative descriptive type, key data used to come from the primary data by questionnaire technique, population or locus Malang sampling technique aims, data analysis refers to the analysis of the path (path analysis). This method was chosen because it is used to analyze the pattern of relationships among variables. Purpose of path analysis is to determine the effect of directly or indirectly through a set of independent variables to the dependent variable through the variable or intervening variables. Influence the path shown by the path coefficient on each path diagram of causal relationships between the independent variables to the dependent variable (Riduwan, 2006).

Analysis Variable Description Reinventing Governance Inter-Regional Cooperation  
Analysis of the variable description Reinventing Governance Inter-Regional Cooperation results statement rata-rata/mean respondents with the following values: Value index Reinventing Governance Inter-Regional Cooperation of 3.71, this means that the respondents give a good perception reinventing governance, inter-regional cooperation. On factors Reinventing Governance Inter-Regional Cooperation is seen that the highest value of the index on the belief that regional autonomy is better when compared with centralized practices with a value of 3.95. Meanwhile, the lowest value is the belief that the legitimacy / justification stronger political and moral as well as reliable in the implementation of democratization, with a value of 3:56. Means "orientation to a value (improved quality), public service users satisfied, providing fast. So as to solve the "bad governance" that occurs due to the accumulation of problems that have long been inherent in the life of public bureaucracy, so that one also in framework, resulting in non-performance of the vision, mission and identity, to have an impact on day-to-day activities of the bureaucracy and the ultimately not in accordance with the wishes of the citizens. Henceforth to be reformed is the "mindset of bureaucratic behavior as a public official, a public servant ruler, so the mission is no longer a controller.

## **3. Variable Description Analysis Services**

Analytic description of the variables of Public Service, from the statements made respondents with a mean index value outcome statement of 3.67, this means that public service is well done. On the factor of public services is seen that the service provided for the public good get the highest index value of 3.82. This means the service provided simple / simple, straightforward. While the lowest index value in an environment that ensures safety in the public service is not maximized, with a value of 3:53.

Its meaning is what is expected of local wisdom or good local is the belief that regional autonomy is better when compared with centralized practices, legitimacy and moral or political justification is stronger, so we need a reliable form of autonomy from the influence of positive and linear implementation of democratization expected to further the public welfare. Or in other words "orientation to a value (improved quality), 1) public service users satisfied, providing fast", (performance improvement), with 2) explore the values and traditions that are considered good (local wisdoms) then transfer bureaucratic life, with 3) the belief that the local autonomy when compared with centralized practice, had 4) legitimacy and moral or political justification more powerful and reliable than a positive influence and linear implementation is expected to further democratization in 5) to increase the welfare of society.

## **4. Analysis of Governance Variables Description**

Governance yield index value of 3.73, indicating Governance also running well. In the governance variables, see the Government is responsible (accountable) to the people getting the highest index value of 3.95. This means that the accountability of government to the people to be the main factor of the best governance. While the lowest index value that the current administration is effective, but not maximum, seems to have the lowest score at 3:56. Its meaning application of good governance includes equity (equity), supervision (supervision), law enforcement (law enforcement), responsiveness (responsiveness), efficiency and effectiveness (effectiveness and efficiency), participation (participation), professionalism (professionalism), accountability (accountability), foresight (strategic vision) and transparency (Transparency) to function properly.

So the issue of Bad Governance Failures caused by: Lack of institutional organizers, non-transparent, low participation, low responsiveness to citizens, discrimination against different stakeholders as well as efficiency, it does not happen, the necessary legitimacy and moral or political justification for a stronger, so that the linear effect of regional autonomy in increasing the quality of public welfare.

## 5. Analysis of Behavior Variables Description Arrogance and Government Reform Society Apathy Attitude

Analysis of descriptions of the behavior variables Arrogance and Government Reform Society Apathy Attitude respondents was 3.77 results statement, it means that the behavior of the Government Reform and Public Attitudes tend to be good, but the variable behavior of Arrogance and Government Reform Society Apathy Attitude, looks thinking (cognition) government officials and community easily irritated with the highest index value 3.86. This means thinking (cognition) and the local government to be the main factor irritable behavior variables and Government Reform Public Attitudes well. While the lowest index value is feeling government officials and the public easily offended by 3.72.

Its meaning is that the attitude is not only a mental aspect alone but also covers aspects of physical response, which can be in the form of feeling in favor, favor (favorable), feelings of support or non-partisan (unfavorable), so the attitude is a certain regularity in terms of feelings (affective), thinking (cognition), and predisposition action an aspect of one's surrounding environment. Thus all human behavior (except instinct) is a result of learning, meaning that changes in the behavior of the organism as the influence of the environment, which is driven by the desire to seek pleasure and avoid pain (hedonism), subject to the principle of reward and punishment, therefore human beings are born with no properties or social psychology, human behavior is the result of experience, and behavior driven or driven by the need to increase pleasure and avoid pain. Subsequent developments indicate that human behavior is not only born to learn from experience, but there is an ongoing learning process in man. The behavior is the result of cognitive factors and the environment. That is, we were able to have certain skills, if there is a positive braid between stimuli and characteristics that we observe ourselves.

That the structure of the human psyche consists of id (consciousness), ego (I), and the superego. That the human psyche, will be healthier if the three elements work in harmony. And a healthy mental condition enables human behavior to be healthy too, it is able to raise someone on affiliation motive, motive power, achievement motive, affiliation motive, the motive which impels a person to liaise closely with other people who are mutually agreeable, characteristics namely, happy to develop and maintain close and intimate relationships.

## 6. Test Instrument, Validity and Reliability

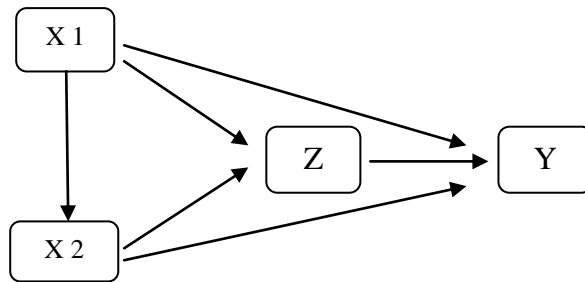
Test instruments performed on indicators of each variable in order to know the level of validity and reliability of indicators as a measurement variable. The test instrument consists of validity and reliability. Tests carried out to measure the validity legality or questionnaire indicators of each variable. Testing is done by comparing the count  $r$  and  $r$  table. The  $r$  value is the result of the correlation is calculated respondents' answers to each question in each of the variables were analyzed using SPSS program and named the corrected item correlation output. Meanwhile, to get  $r$  done with the table-table-product moment  $r$ , which determines  $\alpha = 0.05$  then  $n$  (samples) = 57 so that the obtained value of  $r$  table two sides of 0.256. Level indicators or questionnaire validity can be determined, if the count  $r > r$  and  $r$  table = Valid count  $< r$  table = Not Valid. The validity of the test results can be seen as follows: The test results demonstrate the validity of the value of each indicator variable  $r$  count reinventing government inter-regional cooperation, public service, good governance, and the behavior and attitude of arrogance of government officials public apathy, greater than the value of  $r$ -table. Thus, the indicator or the questionnaire used by each variable reinventing government inter-regional cooperation, public service, governance, and behavioral arrogance of the government apparatus and public apathy attitude, declared invalid for use as a gauge variable.

Reliability test is used to determine if the indicator or the questionnaire used is trustworthy or reliable as a measurement variable. Reliability is an indicator or questionnaire can be seen from the value of Cronbach's alpha ( $\alpha$ ), when the value of Cronbach's alpha ( $\alpha$ ) is greater ( $>$ ) 0.60, the indicator or questionnaire is reliable, whereas if the value of Cronbach's alpha ( $\alpha$ ) is smaller ( $<$ ) 0.60 the indicator or unreliable questionnaires. Overall reliability test results can be seen the results as follows: Cronbach's alpha value of all the variables is greater than 0.60, so it can be concluded or the questionnaire used indicator variables reinventing government inter-regional cooperation, public service, good governance, and the behavior of government official arrogance and the attitude of the public apathy, all expressed as a reliable or trustworthy gauge variables.

## 7. Test Discounter

In proving that the variable Governance can become variables that mediate Reinventing Governance Inter-Regional Cooperation and the Public Service of the Government Apparatus Behavior Arrogance and Apathy Public Attitudes, the calculation of direct and indirect influence between Reinventing Governance Inter-Regional Cooperation and the Public Service Behavior Apparatus arrogance Government and Public Apathy

attitude. If the indirect effect Reinventing Governance Inter-Regional Cooperation of the Government Apparatus Behavior Arrogance and Apathy Attitude Governance Society through influence rather than directly Reinventing Governance Inter-Regional Cooperation and the Public Service of the Government Apparatus Behavior Arrogance and Apathy Public Attitudes, the Governance can be variables that mediate between Reinventing Governance Inter-Regional Cooperation and the Public Service of the Government Apparatus Behavior Arrogance and Apathy Public Attitudes. To perform calculations directly and indirectly made of the value of standardized regression coefficients each independent variable on the dependent variable and path analysis can be made as follows:



Explanation:

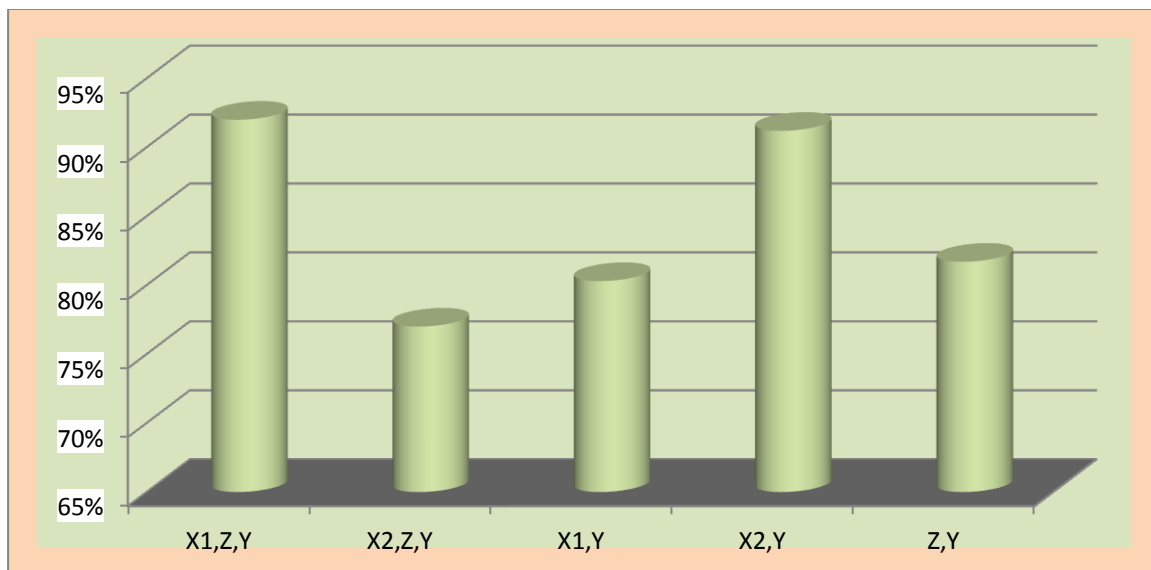
- X<sub>1</sub> : Reinventing Governance inter-Regional Cooperation
- X<sub>2</sub> : Public Service
- Z : Governance
- Y : Arrogance and Apathy Public Attitudes

Goal:

(X<sub>1</sub>,Z, Y= 92%, X<sub>2</sub>, Z, Y= 77%, X<sub>1</sub>,Y = 80,3% X<sub>2</sub>,Y=91,2%, Z,Y=81,7%

**Figure 1.** Calculations directly and indirectly made of the value of standardized regression coefficients each independent variable on the dependent variable and path analysis

Its meaning all variables and indicators of both positive and fit for use as a condition or element Reinventing Governance Model Inter-Regional Cooperation Through Governance and Service Delivery Efforts to Reduce Harmonic Behavior In Administrative Government Arrogance and Apathy Public Attitudes.



**Figure 2.** Reinventing Governance Model Inter-Regional Cooperation Through Governance and Service Delivery Efforts to Reduce Harmonic Behavior In Apparatus Government Arrogance and Apathy Public Attitudes.

Its meaning is that, the first model is Reinventing Governance Model Inter-Regional Cooperation Through Governance Reform to Reduce Government Arrogance and Apathy Public Attitudes, by 92% While the model is the second most effective is that Building Services good to Reduce Government Administrative Arrogance and Apathy Public Attitudes, amounting to 91.2%.

## 8. Conclusion

Reinventing Governance Inter-Regional Cooperation simultaneously has a positive and significant impact on reduction behavior Apparatus Government Arrogance and Apathy Public Attitudes, through the Government and Public Service.

Its meaning is that, the first model is Reinventing Governance Model Inter-Regional Cooperation Through Governance Reform to Reduce Government Arrogance and Apathy Public Attitudes, by 92% While the model is the second most effective is that Building Services good to Reduce Government Administrative Arrogance and Apathy Public Attitudes, amounting to 91.2%

## References

- [1] Achmady, Solichin, 1994, Islamic, Irfan, Trilaksono, Zauhar.S, Public Policy and Development, Malaysia, 1994 (in Indonesian)
- [2] Arikunto, Suharsimi, 1997, Research Procedures, Rineka Copyright, Yogyakarta, (in Indonesian)
- [3] Anwar, Saifuddin, 1995, Human Attitudes, theory and measurement, Library Student, Yogyakarta, (in Indonesian)
- [4] Black A. Black, J.Champion, Dean, 1992, Social Research Methods and Problems, PT Aresco, London.
- [5] Burhan Bungin, 2001, Social Research Methodology, formats Quantitative and Qualitative, Airlangga University Press, (in Indonesian)
- [6] Colin G. Armisted, Graham Clark. 2009, Customer Service and Support
- [7] Dunn, N, William, 2000, Public Policy Analysis, PT Pratama Prasetia Widia, Yogyakarta (in Indonesian)
- [8] Dwiyanto, Agus, Delivering Good Governance Through Public Service, Gajah Mada University Press, Yogyakarta, 2008; (in Indonesian)
- [9] Gaspersz, Vincent, 2004, Strategic Planning, for Improved Performance, Public Sector, Scholastic Press, Jakarta. (in Indonesian)
- [10] Hasan, Tholchah, Muhamma, Cs, Qualitative Research Methodology, Theoretical and Practical Overview, Visipress, Malang, 2002(in Indonesian);
- [11] Haris, Shamsuddin, 2007, Decentralization and Regional Autonomy, LIPI Press, Jakarta (in Indonesian)
- [12] Ibrahim, Amin, 2008, Theory and Concepts And Implementation Services, Mandar Forward, London, (in Indonesian)
- [13] Islami, Irfan, 1984, Principles of State Policy Formulation, Earth Literacy, Fia UB, Malang, (in Indonesian)
- [14] Kaloh, Finding Form Autonomy, 2002, One Solution in response to Local Needs and Global Challenges, Rineka Copyright, (in Indonesian)
- [15] Kencana, Inu.S., 1997, Science, Public Administration, Rineka Copyright, Jakarta.Kreitner, Kinicki, Organizational Behavior, Salemba Four, 2005; (in Indonesian)
- [16] Krech, David, 1996, Individual in Society, Siti interpreter Rochanah, et, al. Guidance and Language Development Center, Department of Education, Jakarta. (in Indonesian)
- [17] Krech, David, 1996, Social Attitudes, Siti interpreter Rochanah, Part Two, Development and Language Development Center, Department of Education, Jakarta. (in Indonesian)
- [18] Lynn, Laurance, 2000, Studying Governance and Public Management. Why?, How? In Governance and Performance New Perspective, ed by Carolyn Heinrch and Lynn Washington DC, George Town University Press
- [19] Mahendra, Djunaedi, H., 2003, Fighting Together Building People, Sketch, Madiun. (in Indonesian)
- [20] Marijan, lackey, 2006, Ironi Representatives, Opinion, Jawa Pos, March 24, Surabaya (in Indonesian)
- [21] Muhadjir, Noeng, 2004, Policy and Evaluation Research Methodology, Rake Sarasin, Yogyakarta, (in Indonesian)
- [22] Mujani, Saiful, 2006, Worst Performance of Political Parties, Jawa Pos, March 24, Surabaya. (in Indonesian)
- [23] Mukhlis, Imam, 2006, Stempel Tailor Salary Up, Articles, Jawa Pos, March 13, Surabaya, (in Indonesian)
- [24] Mujani, Saiful, 2006, Worst Performance of Political Parties, Jawa Pos, March 24, Surabaya. (in Indonesian)
- [25] Nisjar, S. 2010, We. Some Notes on Good Governance. Journal of Development Administration Vol. 1. No. 2. 119. (in Indonesian)

- [26] Nawawi, Handari, 1993, Martini, Mini, Applied Research, Gajah Mada University Press, Yogyakarta (in Indonesian)
- [27] Nasucha, Chaizi, 2004, Public Administration Reform, Theory and Practice, Grasindo, Jakarta,
- [28] Nasution, Zulkarimen, 2002, Development Communication, Development Theory and Practice, revised edition, PT King Grafindo Persada, Jakarta, (in Indonesian)
- [29] Nduhu, Talizi, Ndraha, 1985, Theory Methodology Research Administration, Literacy Development, Jakarta, (in Indonesian)
- [30] Nurudin, (in Indonesian)2005, Communication Systems Indonesia, PT Raja Grafindo Persada, Jakarta, 2005;
- [31] Poltak, Lijan.S., 2008, Public Service Reform, Theory, Policy, and Implementation, Earth Literacy, Jakarta. (in Indonesian)
- [32] Singarimbun, Masri and Sofian Effendi, 1987, Survey Research Methods, LP3ES, Yogyakarta(in Indonesian)
- [33] Sugiyono, 2001, Administration Research Methods, Alfabeta, London, (in Indonesian)
- [34] Solimun, 2002, Structural Equation Modelling (SEM) LISREL and Amos, Malang State University (in Indonesian)
- [35] Syaifiie, Kencana, 2006, Inu, Public Administration, Rineka Copyright, Jakarta, (in Indonesian)
- [36] Soehot, Hoeta,2002, Communication Theory, Foundation Campus Beloved, IISIP, Jakarta (in Indonesian)
- [37] Single, Wijaya, Amin, 1997, Dictionary of Human Resource Management and Organisational Behaviour, Rineka Copyright, Jakarta, (in Indonesian)
- [38] Teguh, Ambar.S., 2004, Understanding Good Governance, Style Media, Yogyakarta. (in Indonesian)
- [39] Rusmiwari, Sugeng, 2002, Strategic Issues in Practice Implementation and Implications Against the State(in Indonesian)
- [40] Administration Curriculum Development Administration Studies, Papers, Regional Seminar, University of Merdeka Madison, Madiun, (in Indonesian)
- [41] Rusmiwari, Sugeng, 2005, Public Participation in Urban Physical Development, Journal of Social Sciences, Social Sciences, University Merdeka Madison, Madison. (in Indonesian)
- [42] Rusmiwari, Sugeng, 2005, Good Governance, A Paradigm In Government Organization, Prospects and Challenges, Paper, Seminar Day, Merdeka University of Madison, Madison. (in Indonesian)
- [43] Rusmiwari, Sugeng, 2008, Behavior and Attitude Apathy Arrogance Legislature Society, Journal of Social, Merdeka University of Madison, Madison. (in Indonesian)
- [44] Yudhoyono, S. B., 2003, Good Governance and Autonomy , Prosumen Forkoma-Map, Kagame, Gadjah Mada University, Yogyakarta. (in Indonesian)
- [45] ....., 2008, Parliament News, Media Information Malang City Council, Jan - Feb, (in Indonesian)